



FREESTANDING RETAIL BUILDING FOR SALE

239 W. Mill Street, Liberty, Missouri




SALE PRICE: \$600,000 | 2,044 SF BUILDING

DEMOGRAPHICS

	1 mile	3 miles	5 miles
Estimated Population	9,837	41,343	70,379
Avg. Household Income	\$89,754	\$125,919	\$129,622

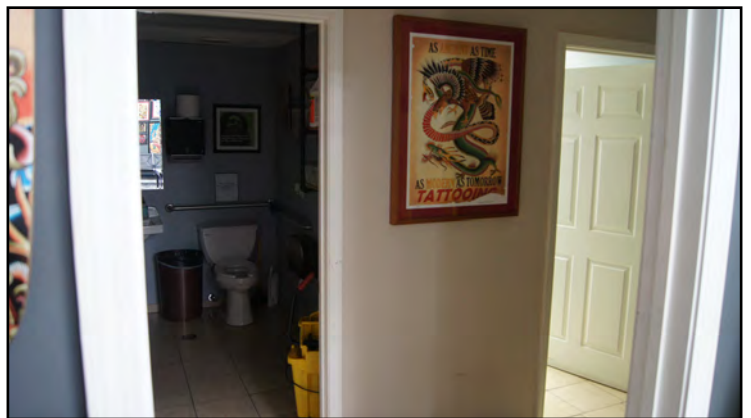
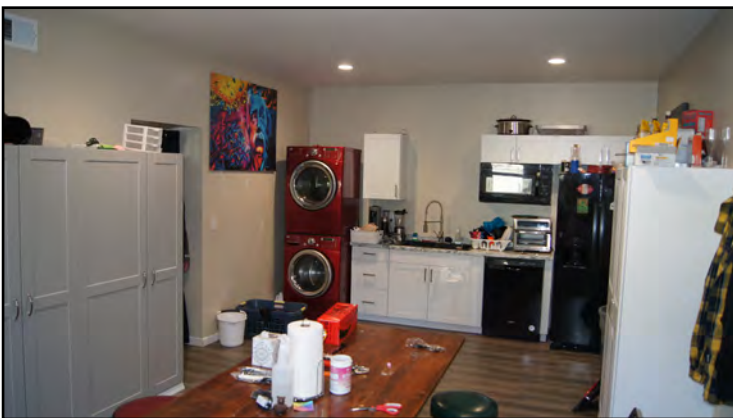
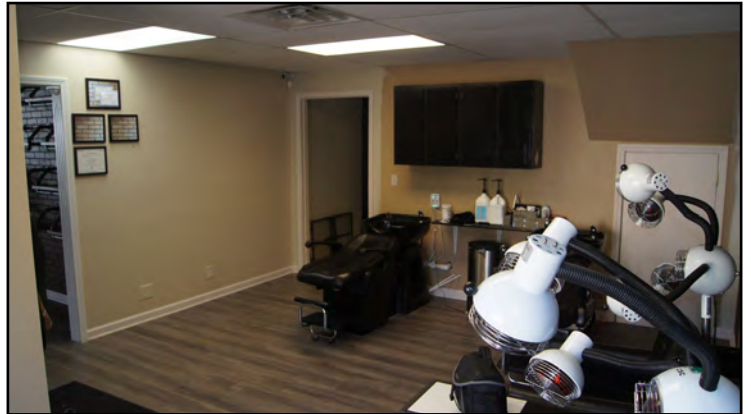
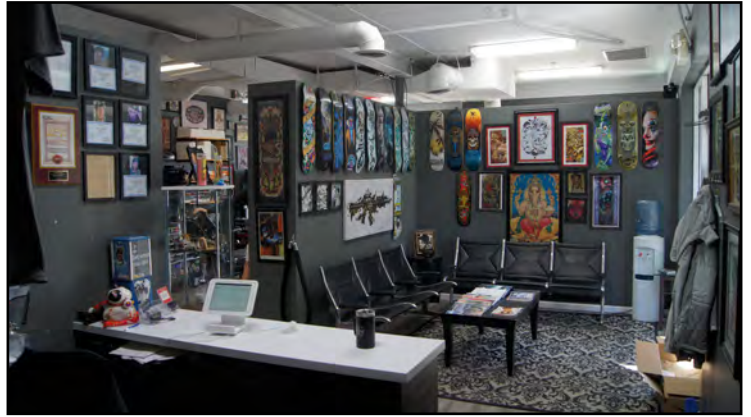
- Newly renovated 2,600 SF freestanding retail
- 0.83 acre lot
- Drive thru potential
- Monument signage on West Mill Street
- Extra storage space in attic
- Great access to West Kansas Street

 [CLICK HERE TO VIEW MORE LISTING INFORMATION](#)

For More Information Contact: *Exclusive Agent*
WILL SANDERS | 816.412.7311 | wsanders@blockandco.com



PHOTOS





FREESTANDING RETAIL BUILDING FOR SALE

239 W. Mill Street, Liberty, Missouri

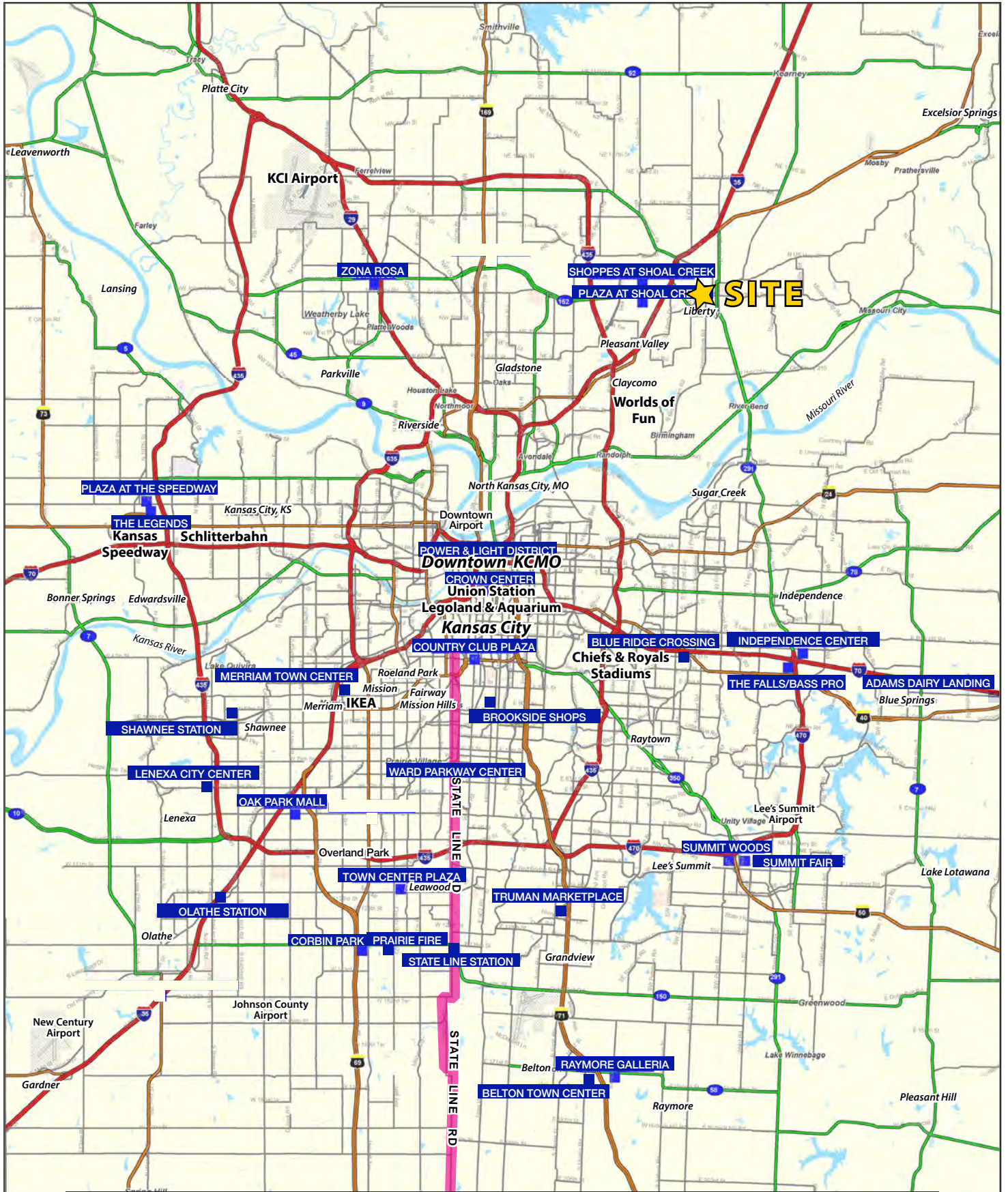
AERIAL





FREESTANDING RETAIL BUILDING FOR SALE

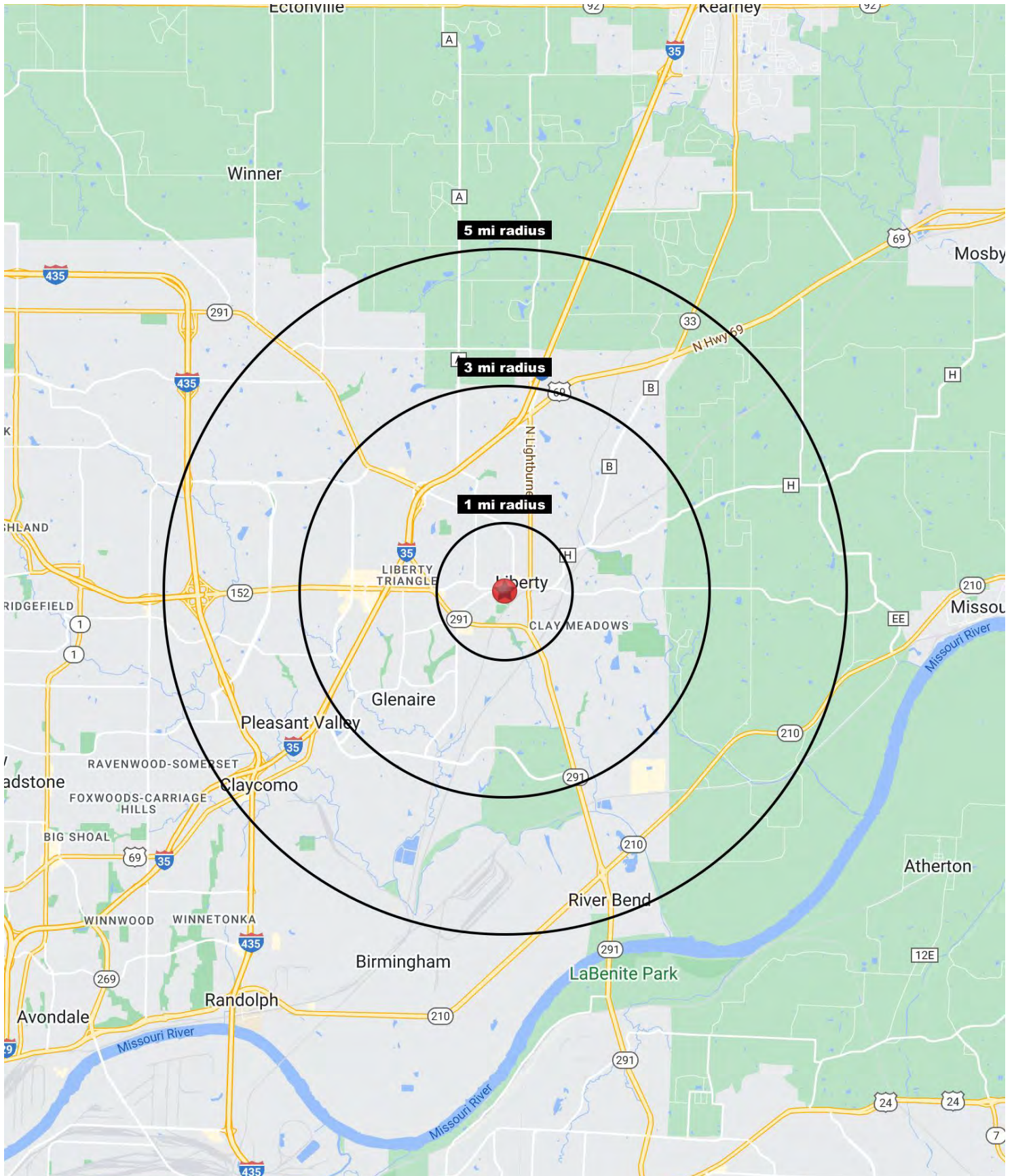
239 W. Mill Street, Liberty, Missouri





FREESTANDING RETAIL BUILDING FOR SALE

239 W. Mill Street, Liberty, Missouri





FREESTANDING RETAIL BUILDING FOR SALE

239 W. Mill Street, Liberty, Missouri

239 W. Mill Street Liberty, MO 64068	1 mi radius	3 mi radius	5 mi radius
Population			
2023 Estimated Population	9,837	41,343	70,379
2028 Projected Population	10,251	43,901	74,756
2020 Census Population	9,385	40,469	68,681
2010 Census Population	9,868	36,010	58,535
Projected Annual Growth 2023 to 2028	0.8%	1.2%	1.2%
Historical Annual Growth 2010 to 2023	-	1.1%	1.6%
2023 Median Age	35.5	37.9	36.5
Households			
2023 Estimated Households	3,913	16,030	26,815
2028 Projected Households	4,069	16,963	28,390
2020 Census Households	3,680	15,140	25,236
2010 Census Households	3,649	13,125	21,098
Projected Annual Growth 2023 to 2028	0.8%	1.2%	1.2%
Historical Annual Growth 2010 to 2023	0.6%	1.7%	2.1%
Race and Ethnicity			
2023 Estimated White	78.4%	83.1%	82.9%
2023 Estimated Black or African American	8.6%	6.5%	6.6%
2023 Estimated Asian or Pacific Islander	5.8%	3.6%	3.3%
2023 Estimated American Indian or Native Alaskan	0.4%	0.3%	0.3%
2023 Estimated Other Races	6.8%	6.5%	6.9%
2023 Estimated Hispanic	6.3%	6.2%	6.5%
Income			
2023 Estimated Average Household Income	\$89,754	\$125,919	\$129,622
2023 Estimated Median Household Income	\$73,566	\$102,750	\$108,398
2023 Estimated Per Capita Income	\$36,276	\$49,058	\$49,537
Education (Age 25+)			
2023 Estimated Elementary (Grade Level 0 to 8)	4.6%	2.0%	1.8%
2023 Estimated Some High School (Grade Level 9 to 11)	4.0%	2.5%	2.5%
2023 Estimated High School Graduate	23.5%	22.4%	22.7%
2023 Estimated Some College	21.8%	21.6%	21.7%
2023 Estimated Associates Degree Only	9.0%	9.1%	9.1%
2023 Estimated Bachelors Degree Only	24.2%	28.1%	27.8%
2023 Estimated Graduate Degree	12.8%	14.3%	14.4%
Business			
2023 Estimated Total Businesses	631	1,649	2,079
2023 Estimated Total Employees	4,646	16,852	19,586
2023 Estimated Employee Population per Business	7.4	10.2	9.4
2023 Estimated Residential Population per Business	15.6	25.1	33.8

©2024, Sites USA, Chandler, Arizona, 480-491-1112 Demographic Source: Applied Geographic Solutions 11/2023, TIGER Geography - RS1

